

Absolute Maximum Rating	
Supply Voltage(V _{DD})	: -0.5 to +4.0 V DC
Storage Temperature Range	: -55 to +125 °C

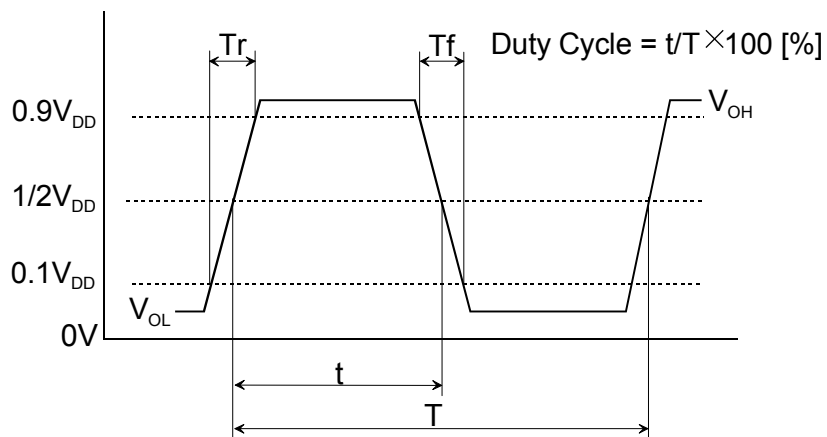
Item		Type	NZ2520SB					
Output Level			C-MOS					
Frequency (* 1)		(MHz)	1.5 ≤ F < 10	10 ≤ F < 20	20 ≤ F < 30	30 ≤ F < 40	40 ≤ F < 50	50 ≤ F ≤ 60
Frequency Stability / Operating Temp. Range		(ppm) / (°C)	± 100 / -20 to +70 ± 50 / -10 to +70 ± 30 / -10 to +60 ± 20 / -10 to +60 (*2) (*2) : Narrow stability in a specific frequency is possible. Please ask the engineering dept. in charge about the applicable frequency.					
Supply Voltage (V _{DD})		(V)	+1.8 ±0.1 +2.5 ±0.1 +3.0 ±0.1 +3.3 ±0.1					
Current Consumption	Operating	+1.8V,25°C	2.5 mA max	3.5 mA max	4.5mA max	5.0 mA max	6.0 mA max	7.0 mA max
		+2.5V,25°C	3.0 mA max	4.0 mA max	5.5 mA max	6.5 mA max	7.5 mA max	9.0 mA max
		+3.0V,25°C	4.0 mA max	5.0mA max	6.5 mA max	7.5 mA max	8.5 mA max	10.0mA max
		+3.3V,25°C	4.5 mA max	6.0 mA max	7.5 mA max	8.5 mA max	9.5 mA max	11.0 mA max
	Stand-by	+1.8V to +3.3V ,25°C	10 μA max					
V _{OL} max / V _{OH} min		(V)	0.1V _{DD} / 0.9 V _{DD}					
Tr max / Tf max		(ns)	5 / 5 (0.1V _{DD} to 0.9V _{DD})					
Duty Cycle		(%)	45 to 55 (at 1/2 V _{DD})					
Load		C _L (pF)	15 max					
Stand-by Function			Yes (tri-state)					

(* 1) : Please ask the engineering section in charge about the applicable frequency.

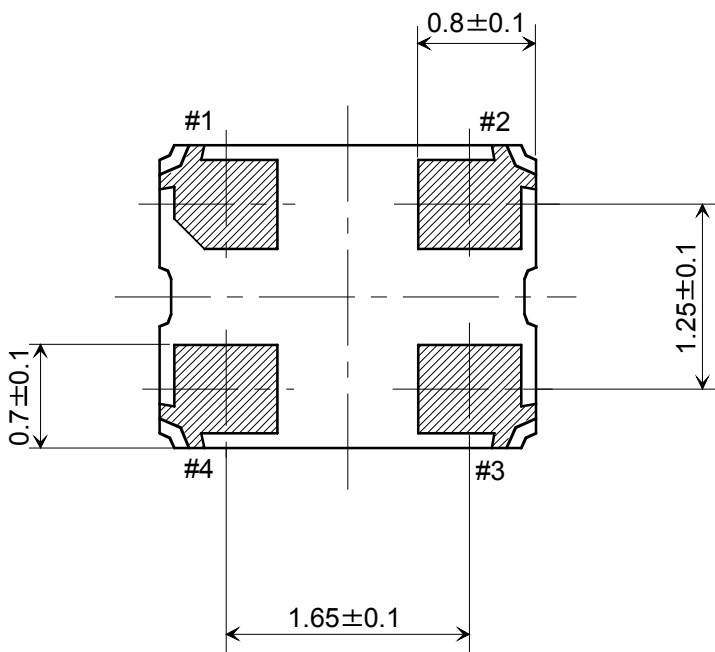
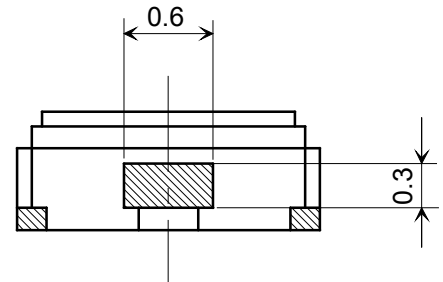
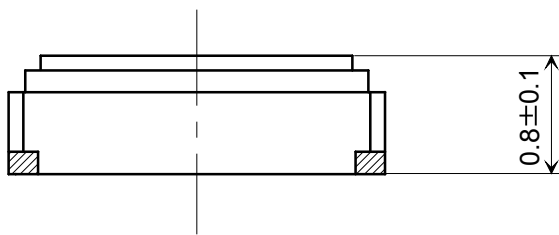
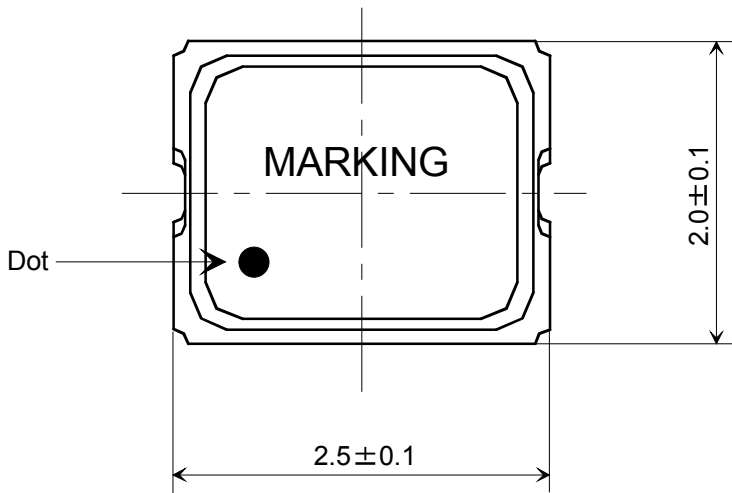
Stand-by Function

#1 PAD input	# 3 PAD output
H level (0.7V _{DD} ≤ V _{IH} ≤ V _{DD}) or open	Operation
L level (V _{IL} ≤ 0.3V _{DD})	High impedance

Output Wave <C-MOS>



NZ2520SB External Dimension

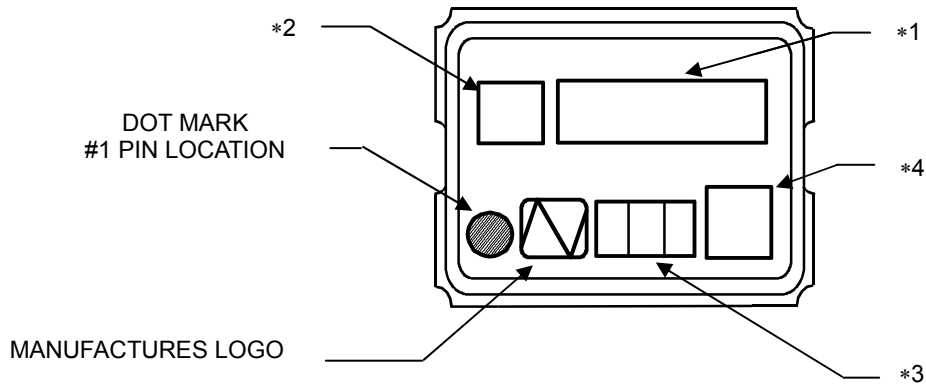


PAD CONNECTIONS

#1	STAND-BY
#2	GND
#3	OUTPUT
#4	VDD

Unit: mm

NZ2520SB Marking



*1 [FREQUENCY]

Digits are five and 6TH digit will be omitted.
 MHz unit sign is not marked.
 ex,) 28.63636MHz → 28.636 [Unit sign not marked]

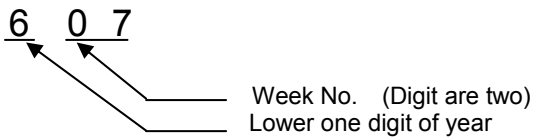
*2 [MODEL MARK]

A last digit of model is marked. →

[MODEL MARK]	
NZ2520SA	→ Space
NZ2520SB	→ B

*3 [WEEK CODE (Digit are three)]

ex1,) In case of 7TH week of 2006



ex2,) In case of 31TH week of 2006

6 3 1

*4 [Trace code]

Trace code consists of four digits number or letter.
 This code indicates production date and production line number.